

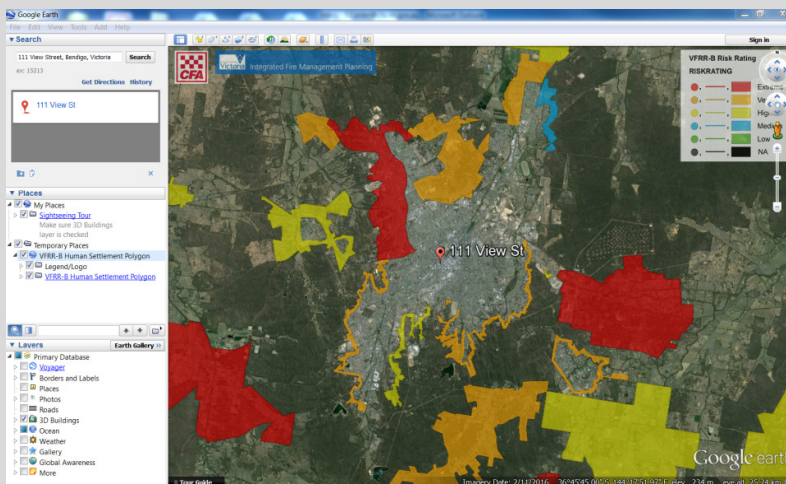
Victorian Fire Risk Register

Information for DHHS clients & services



The Victorian Fire Risk Register – Bushfire (VFRR-B) KMZ file is shared to support DHHS clients and services to identify service facilities located within residential areas of ‘Extreme’ risk from bushfire. Clients and facilities located in these areas are exposed to an increased level of bushfire risk and the department requires specific actions, including mandated relocation and services cessation, for disability and out-of-home care services on code red days.

The VFRR-B KMZ file provided can be viewed using Google Earth to identify residential areas across Victoria at risk from bushfire. If you do not have Google Earth currently installed on your PC or laptop, it is a free download via <https://www.google.com/earth/download/ge/agree.html>.



Search risk ratings

Clients and service facilities can be searched by address using the search toolbar in the top left corner. Mapping will update panning to the correct location and a pin will drop on the address searched. The VFRR-B residential areas are colour coded according to risk (see legend in top right corner).

To determine the risk for service facilities located outside of areas identified, please refer to ‘Considerations’ listed below and seek local advice and knowledge.

CFA release the KMZ file quarterly and provide to the Department of Health and Human Services on 01 September each year. Please note that where 01 September falls on a weekend, CFA will provide the file on the next business day. DHHS Regional Directors will distribute the KMZ file via email to clients and services. For the purposes of the ‘Emergency preparedness policy for clients and services’, the department will use VFRR-B data correct as at 30 September each year to identify service facilities in areas of VFRR-B ‘Extreme’ risk.

Considerations

The intent of the VFRR-B is to support and inform municipal fire management planning for agencies to prioritise bushfire mitigation according to risk.

The VFRR-B does not identify all facilities or homes that may be at risk of bushfire. If a building is isolated with low population density, it may be excluded.

VFRR-B is reviewed annually at a municipal level. Municipal reviews are completed throughout the calendar year and only those completed prior to 01 September will be included in the data provided to DHHS.

If a service facility is located outside of residential areas at risk, it cannot be assumed there is no risk of bushfire.

The VFRR-B should be used with local knowledge the advice of fire services or other relevant experts.

The KMZ file provided only shows residential areas at risk identified within the VFRR-B. The KMZ file does not include children’s services, hospitals, aged-care facilities, infrastructure, commercial industry, tourism events, flora, fauna and those that are culturally significant.

E: riskintelligence@cfa.vic.gov.au

T: (03) 9262 8720